

## Tyler Stableford's Lightroom Workflow (Simplified)

### 1) IMPORTING

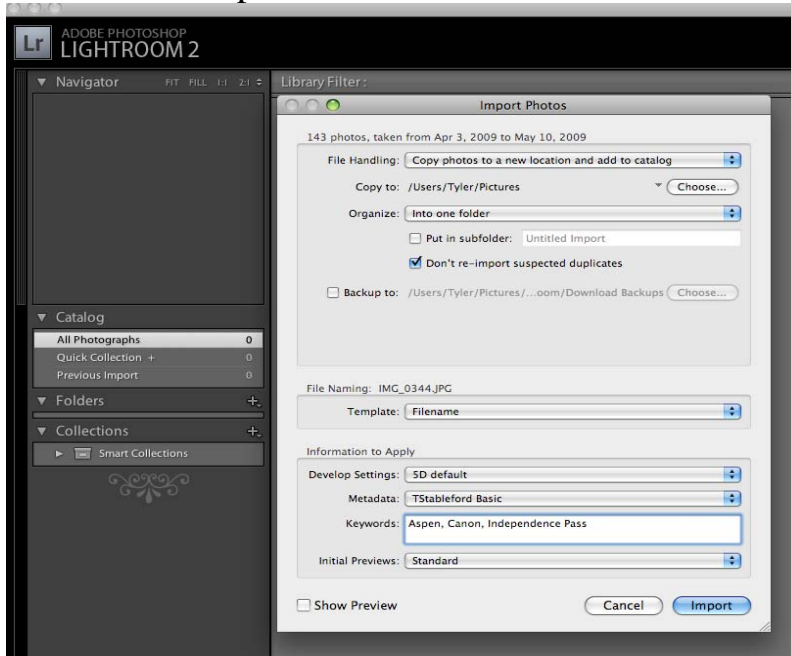
Import your images from your flashcard into Lightroom. Use File: Import Photos From Disk.

If you are importing images directly from your flashcard (recommended), select “Copy Photos to a new location and add to catalog.” (You can format your flashcard AFTER you have downloaded the images successfully and backed up your computer to another location.)

The Import panel is also the place to add Keywords, a copyright, etc in the Keyword and Metadata sections.

If you have “Develop Settings” presets that you like to use, select them here. You can create presets in the Develop pane of Lightroom later, and save processing styles that you like.

Click OK to import.



### 2) EDITING

In the Library pane of Lightroom, you can toggle between the Grid view (by pressing the G key) and the full-screen view (E key) to edit and begin ranking your images. I like to use the full-screen view, and view each image

using the left and right arrow keys. If an image looks worth keeping, give it a 1-Star rating by pressing the number 1. Simply bypass images that you want to discard (i.e. keep them as a 0-Star image).

Once you have selected your initial “keepers,” filter your images to view only 1-Star images by selecting the 1 Star rating in the bottom “Filter” panel. Continue editing your images further, adding a 2-Star rating, etc, until you have narrowed down your images to only the very best files that you want to process.



### 3) PROCESSING

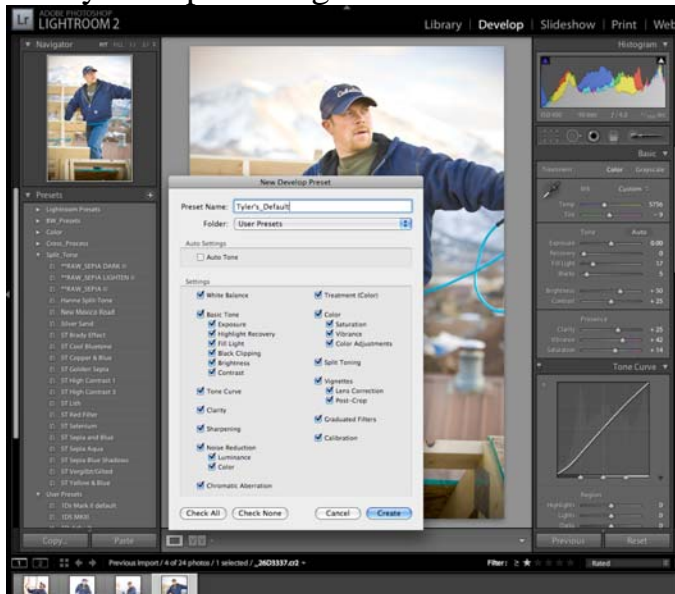
Press the D key to switch to the Develop pane. Work from the top down on the Develop settings, beginning with White Balance Temp and Tint; then Exposure, etc. I commonly use a Black Point around 5, and add a touch of Recovery and sometimes Fill light as needed. Clarity often looks good at a setting of 25; and Vibrance can often be cranked to 25 or even 40 (beware of halo effects on the skyline, however); Saturation maybe around 10-20.

I like adding a touch of Vignette to many of my images (I prefer the “Lens Correction” panel vs the “Post Crop” panel, it’s cleaner); play around with vignettes to see how it focuses the light on your subject.

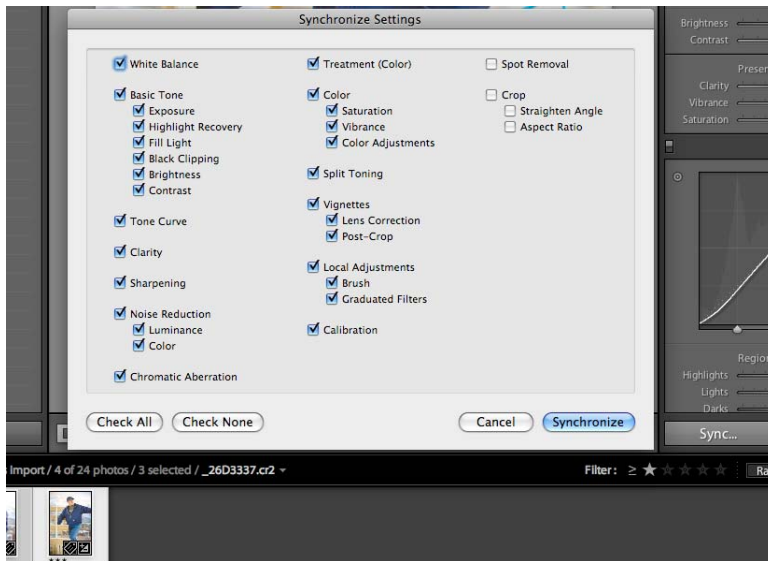
You can crop your image using the R key. Save various versions of your Raw process, if you'd like, by Control-clicking on the thumbnail and selecting "Create Virtual Copy."

Use the Graduated Filter (M key) to selectively darken or lighten the perimeters of your image. Similarly, use the Adjustment Brush (K key) to do the same with local adjustments.

If you like a specific processing "recipe" that you have created, you can save this as a preset to use when importing future images, or to apply to other images in your existing library. Click on the + symbol next to Presets on the left panel, and select the variables to save. This preset will appear the next time you import images.



Similarly, if you want to apply a favorite processing recipe immediately to other photos in your library, click first on the favorite image, then Command-click on the other images to convert. Next, click on the Sync... button in the lower right corner, and select the settings you'd like to apply.



#### 4) EXPORTING IMAGES

When you are finished processing your images, you can export them in various sizes for web, print, etc. Press the G key to go to the Grid View, and select the images you would like to export by Command-clicking on each one. Then go to File: Export. I often select an Output Sharpening setting of Screen, Low.

You can export images again in another format (e.g. low-res jpeg or high-res tiff) if desired.

